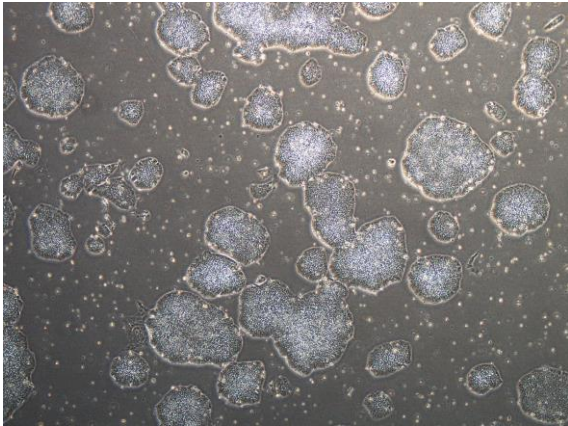
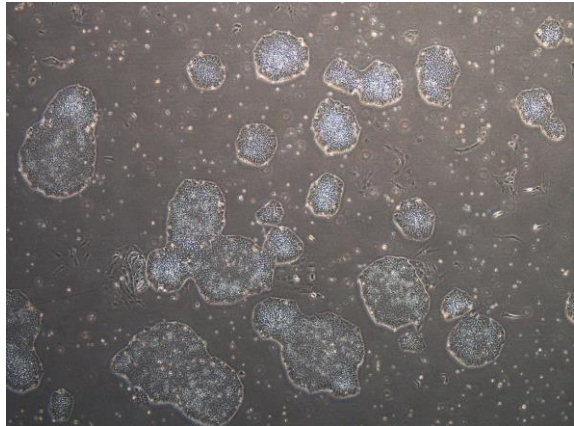


【 CiRA-j-1001 】 Morphology of iPSC colonies

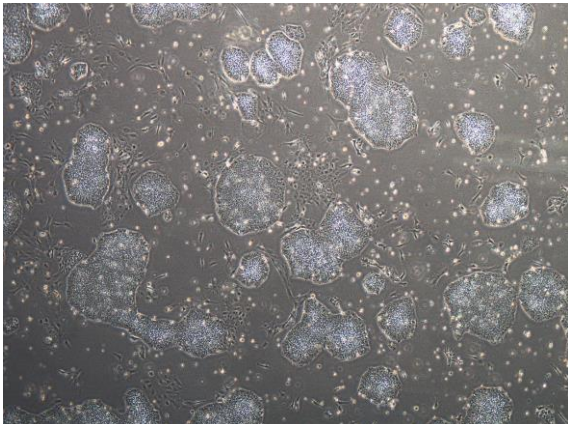
CiRA-j-1001-A: passage-2



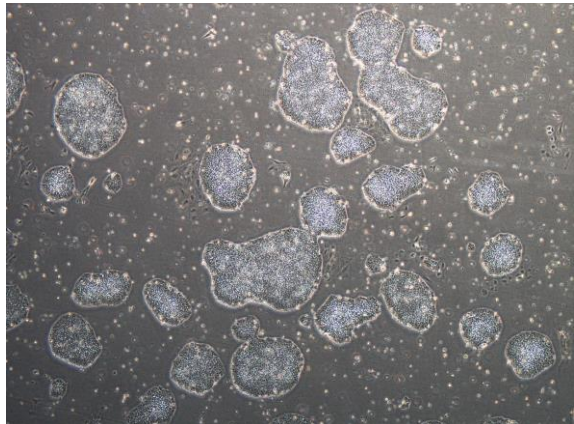
CiRA-j-1001-B: passage-2



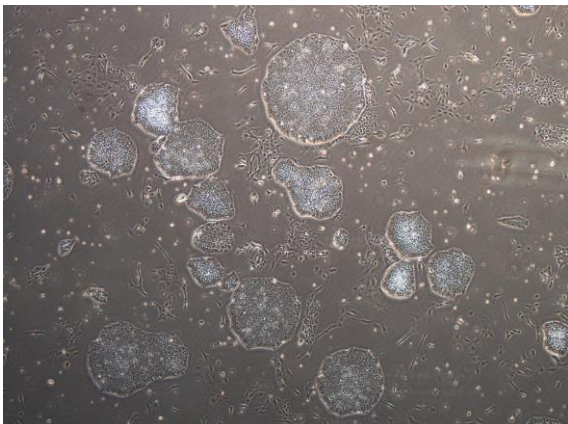
CiRA-j-1001-C: passage-2



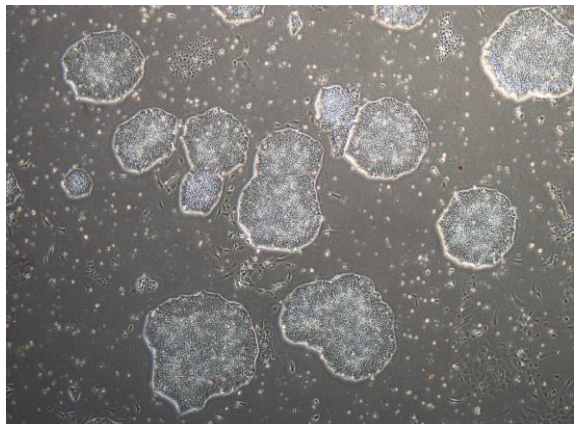
CiRA-j-1001-D: passage-2



CiRA-j-1001-E: passage-2



CiRA-j-1001-F: passage-2



(All images were captured at 4x magnification)